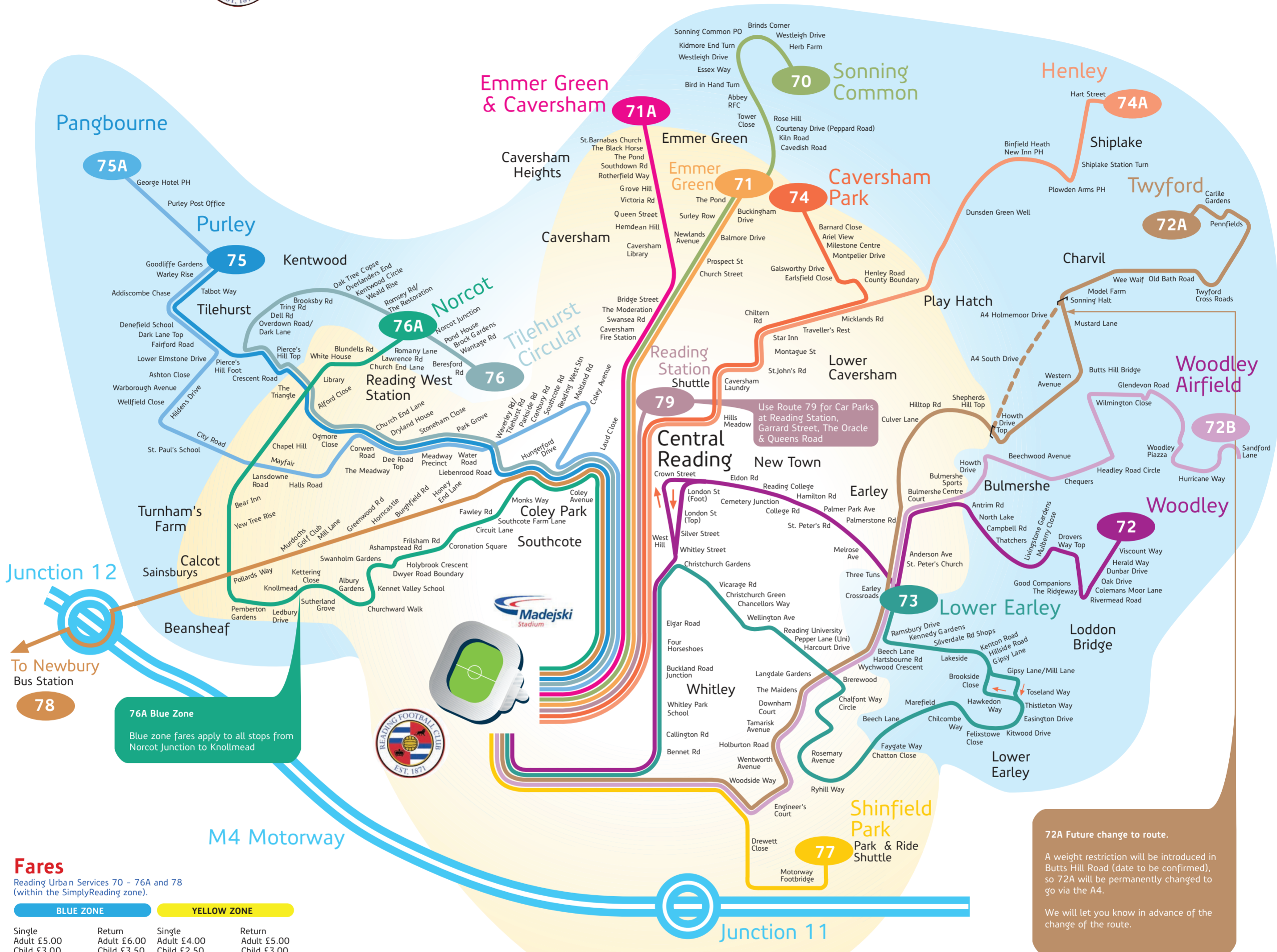


# MATCH DAY BUS SERVICES

brought to you by **Reading buses**



### Fares

Reading Urban Services 70 - 76A and 78 (within the SimplyReading zone).

BLUE ZONE		YELLOW ZONE	
Single Adult £5.00	Return Adult £6.00	Single Adult £4.00	Return Adult £5.00
Child £3.00	Child £3.50	Child £2.50	Child £3.00

### Services 77 and 79

(Shinfield Park-Park and Ride Shuttle, and Reading Station Shuttle)

Single Adult £3.50	Return Adult £4.00
Child £2.00	Child £2.50

Return tickets issued by First FastTrack-Madejski service are accepted on this service.

### Service 78 (Newbury to Reading)

Newbury Bus Station to Pipers Way

Single Adult £7.00	Return Adult £7.50
Child £4.00	Child £4.50

Colthrop Lane to Theale

Single Adult £6.00	Return Adult £7.00
Child £3.50	Child £4.00

Calcot Sainsbury's to Madejski Stadium (yellow zone)

Single Adult £4.00	Return Adult £5.00
Child £2.50	Child £3.00

### On Match Days

The First FastTrack-Madejski service will operate along with service 79 and serve stop WE at Reading Station for journeys to the Stadium and Stop MA at the Stadium for the return journey to Reading Station.

### Alternative kick off times

Where kick off times differ from those shown in the timetables, buses will run the appropriate minutes earlier or later to compensate.

### Concessionary fares

Holders of concessionary travel passes may travel free on these services on production of a valid pass.

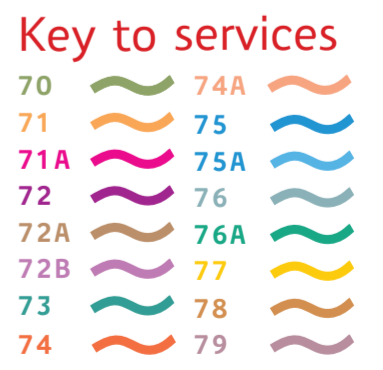
### Travelcards

SimplyBus cards are not valid on these services.

### Day and group tickets

These are not valid on football services.

72A Future change to route.  
A weight restriction will be introduced in Butts Hill Road (date to be confirmed), so 72A will be permanently changed to go via the A4.  
We will let you know in advance of the change of the route.



### stops at Stadium

stop MF ———

Hurst Way - use this stop for 77

stop MA ———

Northern Way - use this stop for 79

**EXACT FARE PLEASE**  
Our drivers do not carry change